

Find best furniture pairs!

What is the goal?

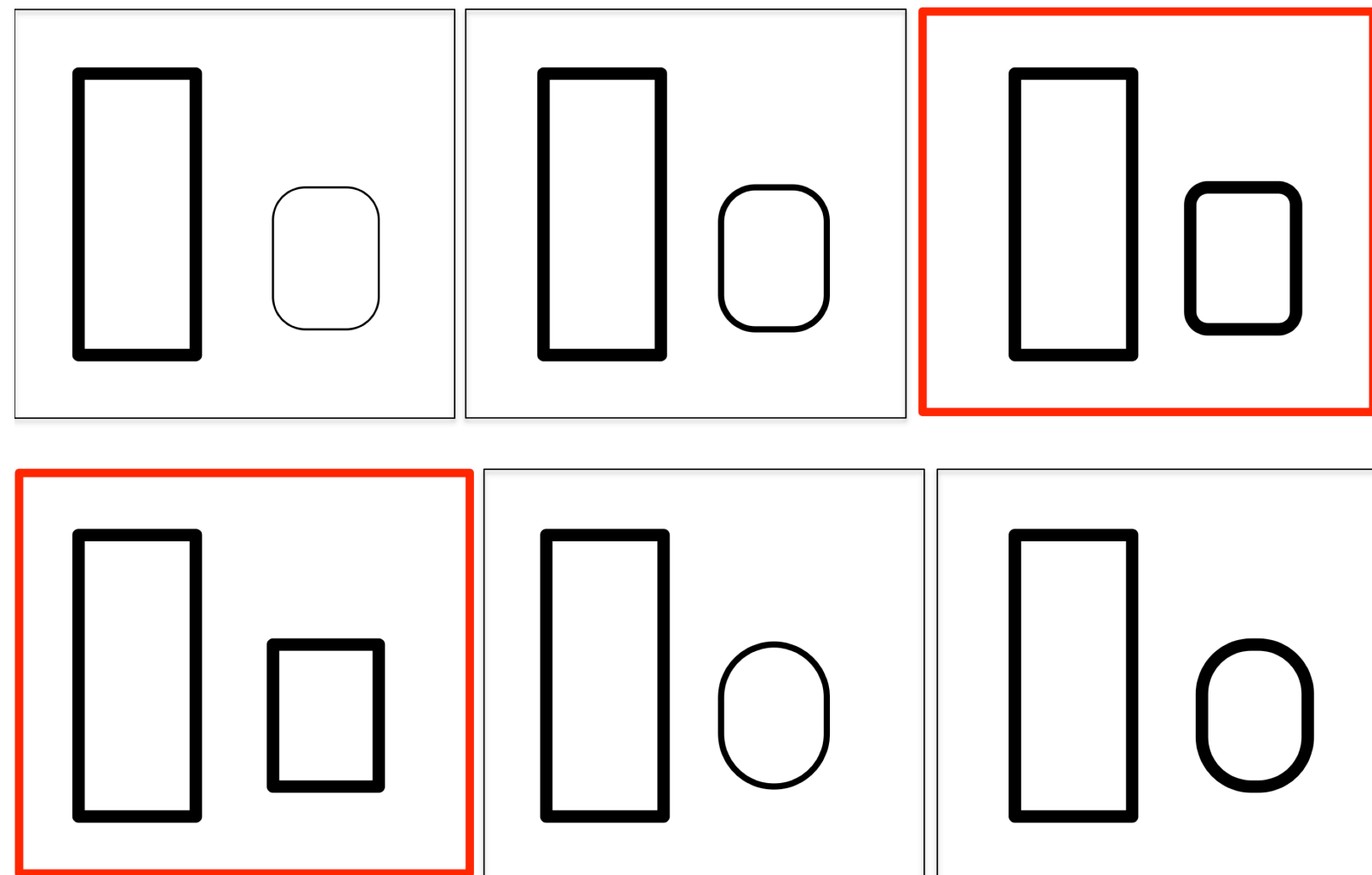
The goal of this study is to learn which pieces of furniture have compatible styles.

In each task, you will see six pairs of furniture pieces (e.g. a dining table and a dining chair). Your goal is to identify the pairs that are most **STYLISTICALLY** compatible. A pair of furniture pieces is considered to be most stylistically compatible if somebody would be most likely to put the two furniture pieces together in the same room if he was furnishing an apartment.

In each task, you are asked to select **TWO** pairs, i.e. the most compatible pair, and the second most compatible pair.

How should I do it?

You can select or unselect a pair by clicking the corresponding image. Once a pair is selected, a red box should show up. Please make sure exactly **TWO** pairs are selected in each task. An illustrative example is shown below.



This assignment contains 33 tasks. Please click the 'submit' button at the bottom of the webpage when you finish. Then, the webpage will check if exactly two items are selected in each task. Once you pass the check, then you will jump to a new webpage, which includes the confirmation code that you need to paste into the box in 'On Complete'. We will not be able to pay you unless you complete the task and input the correct

confirmation code. This assignment will normally take 5 ~ 10 minutes.

How do you evaluate my submission?

Please do not fill out the answers randomly.

The tasks contain several control questions to test that you are completing the assignment honestly. If too many of the control questions are answered incorrectly, your submission will be rejected and it is possible that you will be blocked from completing any further tasks of this HIT.

Where should I start?

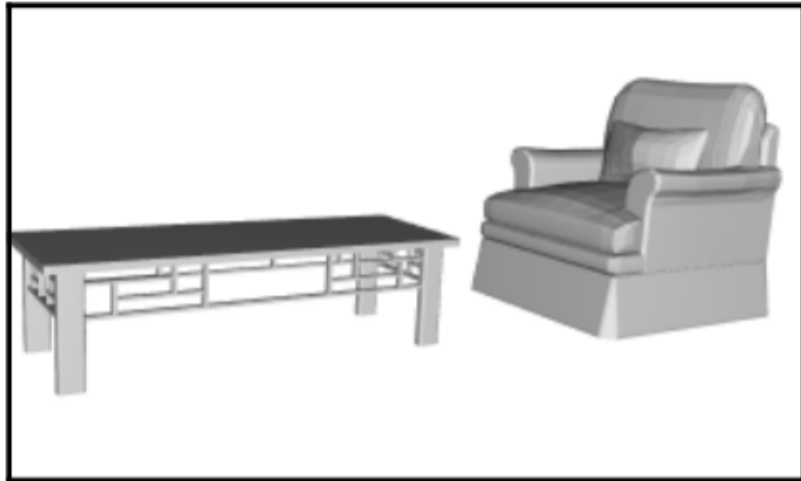
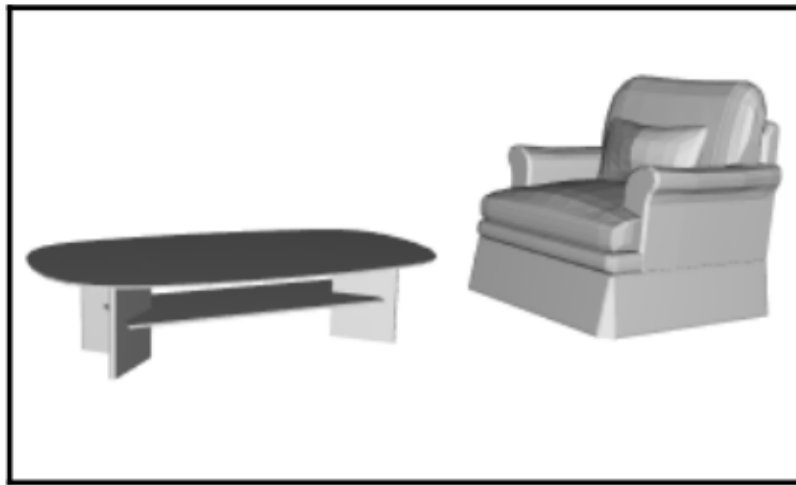
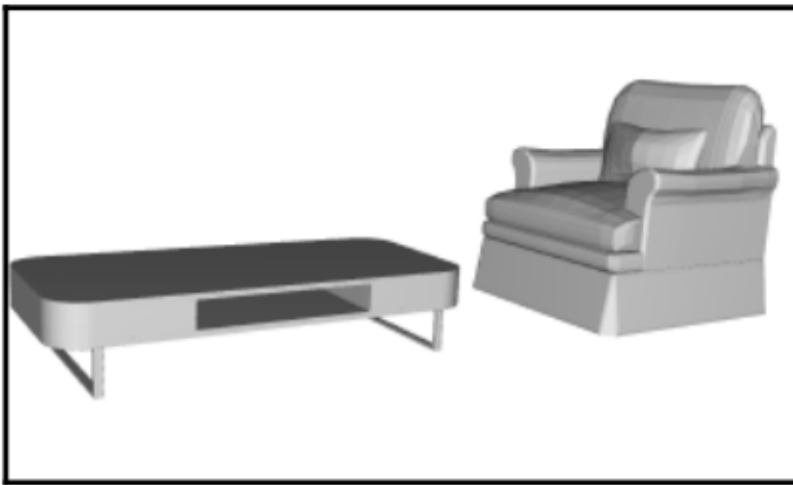
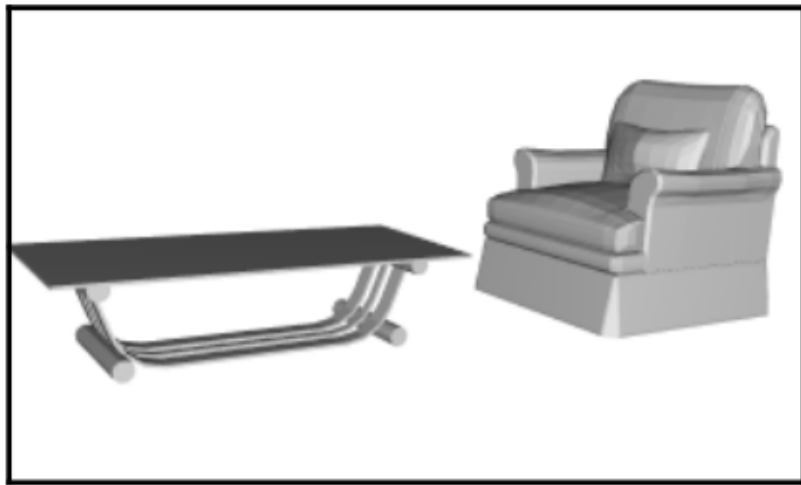
Click here to work on the HIT (in a new tab).

On complete

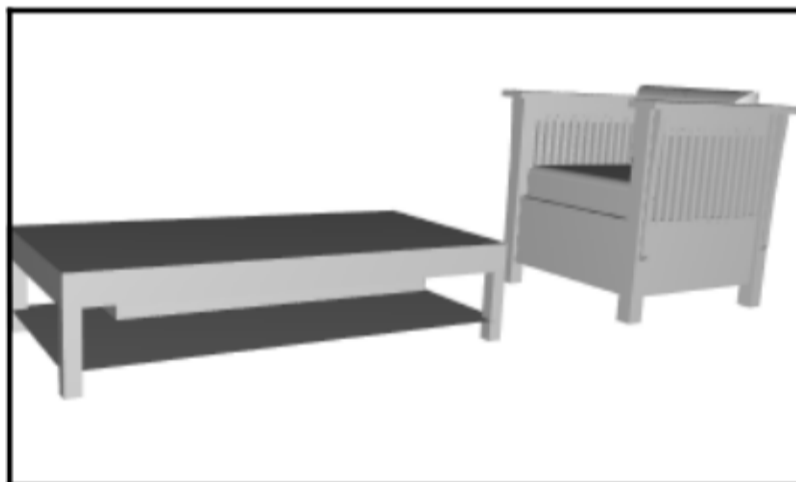
When you finish, please enter your completion code in the box below:

If you have any comments for us, please let us know here (optional):

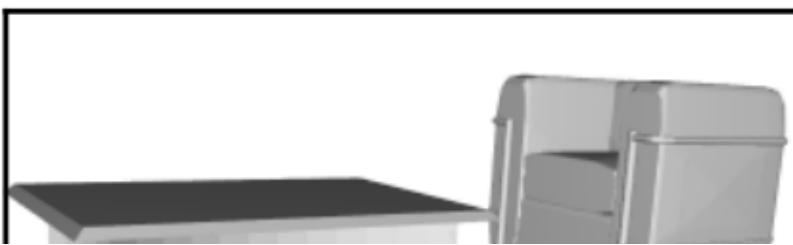
Task 1 of 33

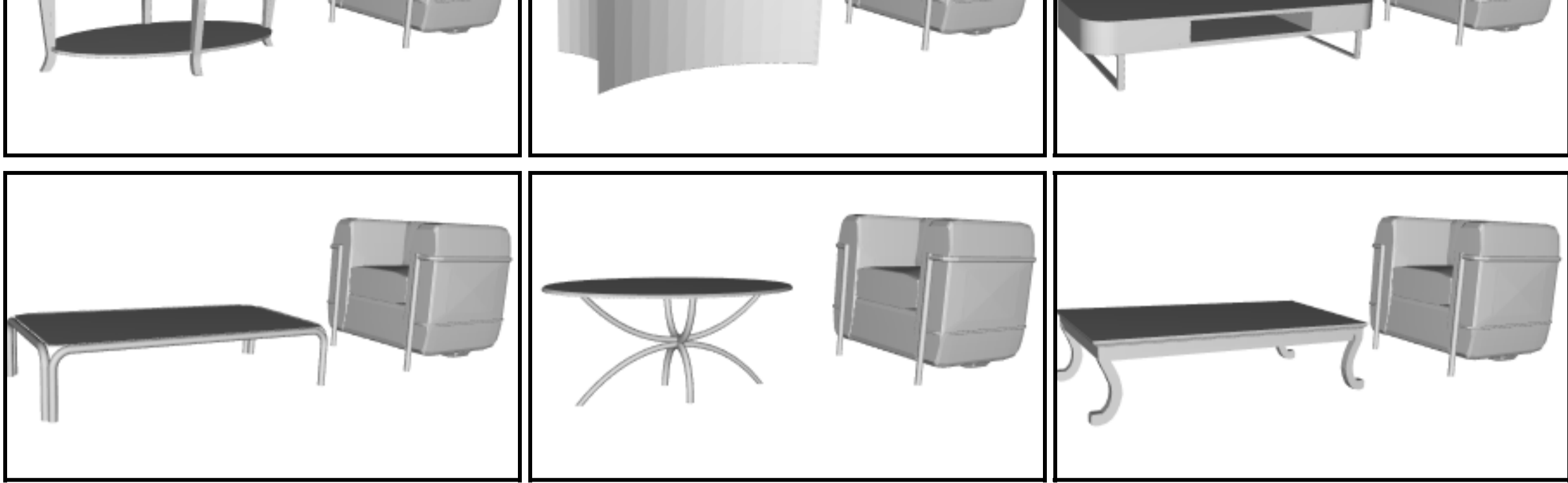


Task 2 of 33

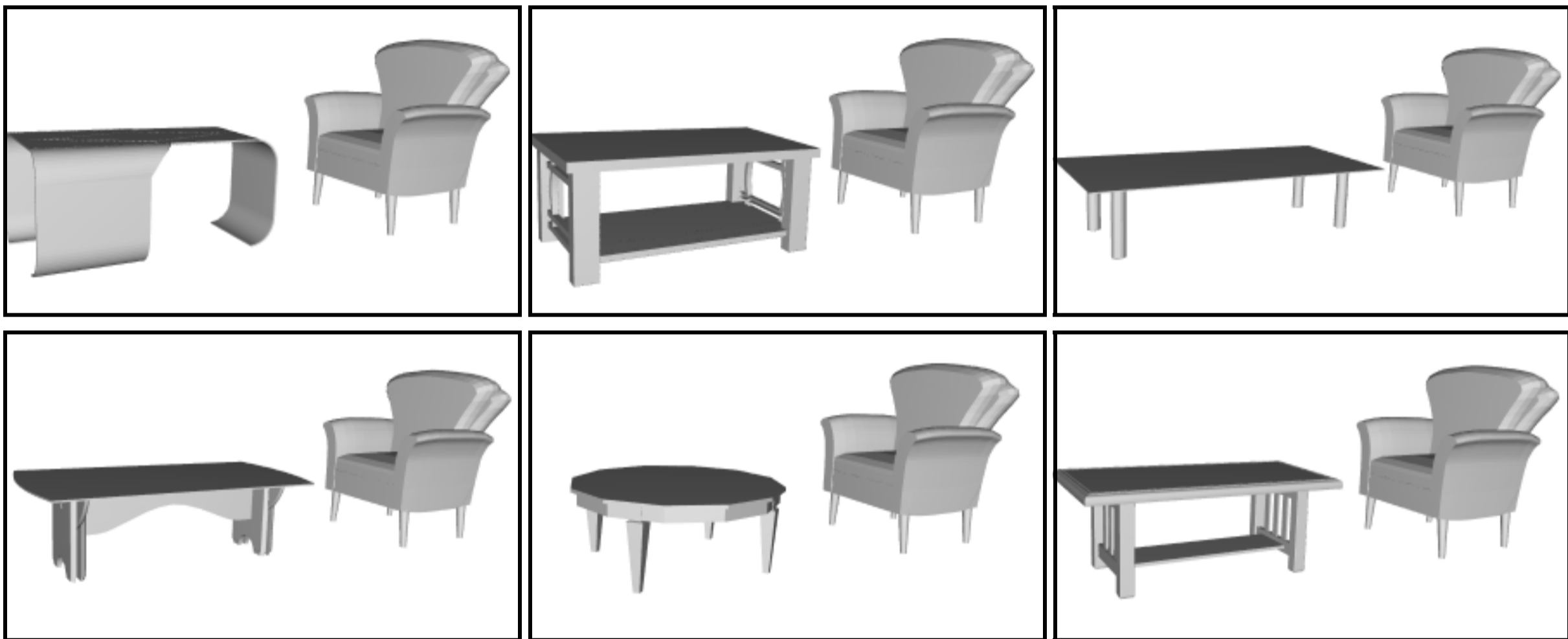


Task 3 of 33

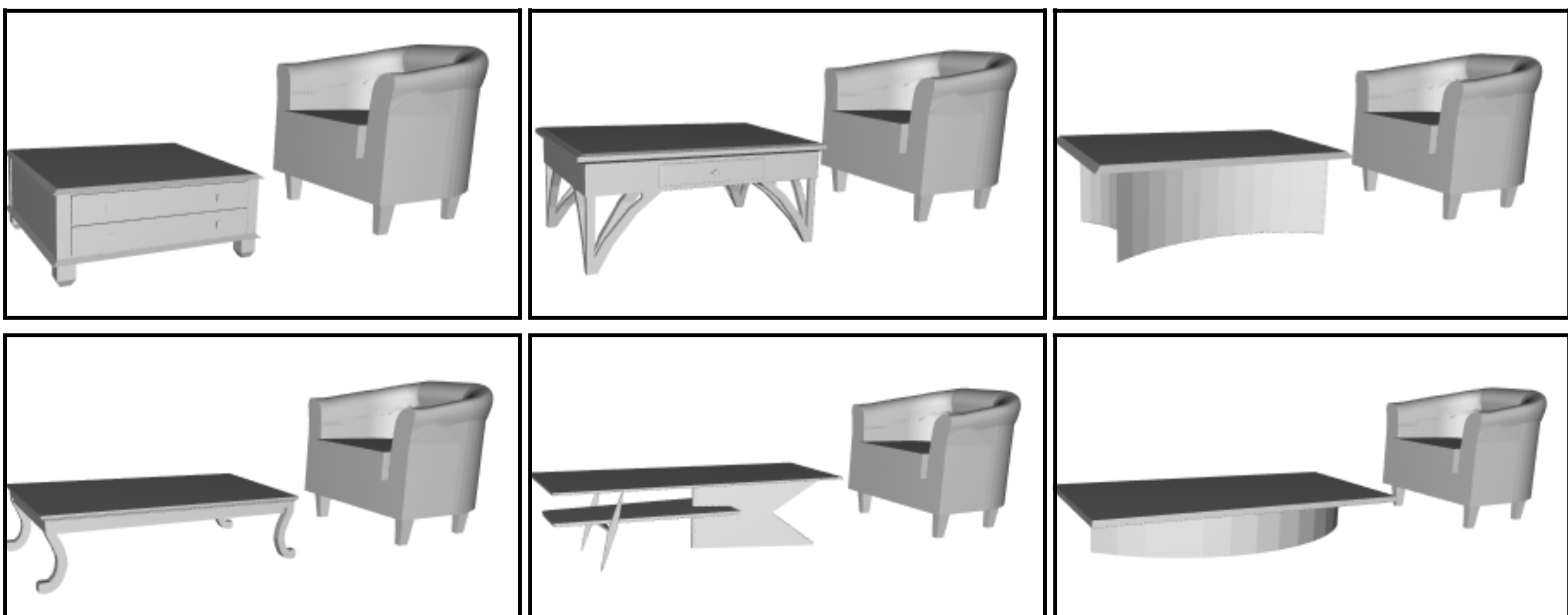




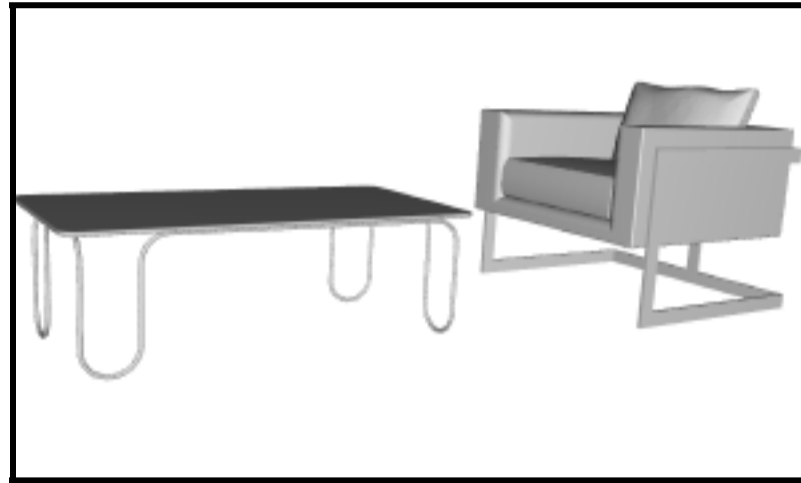
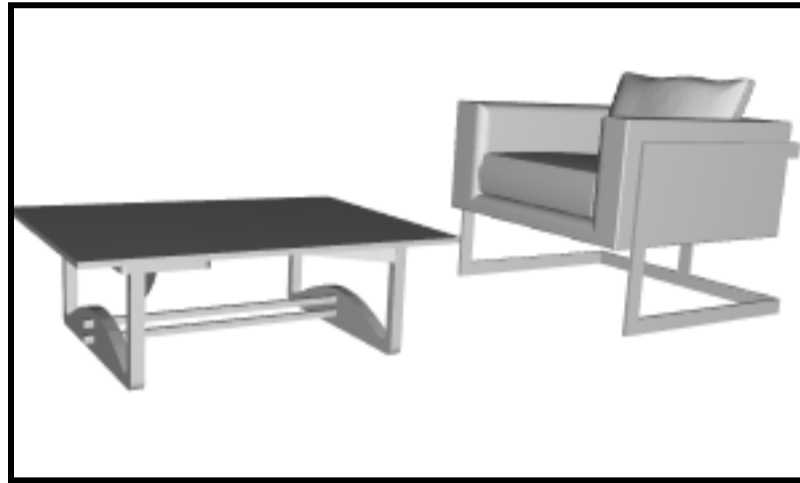
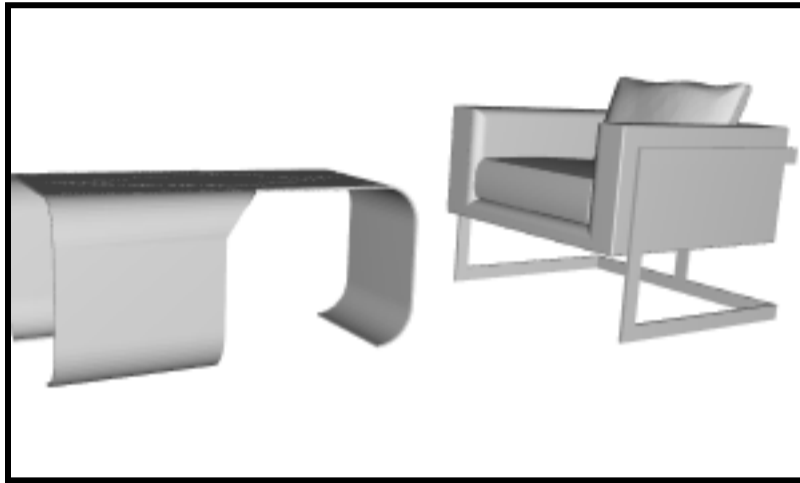
Task 4 of 33



Task 5 of 33



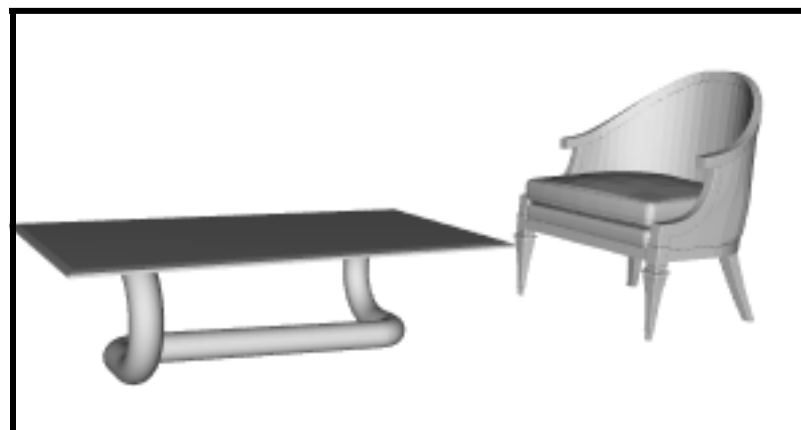
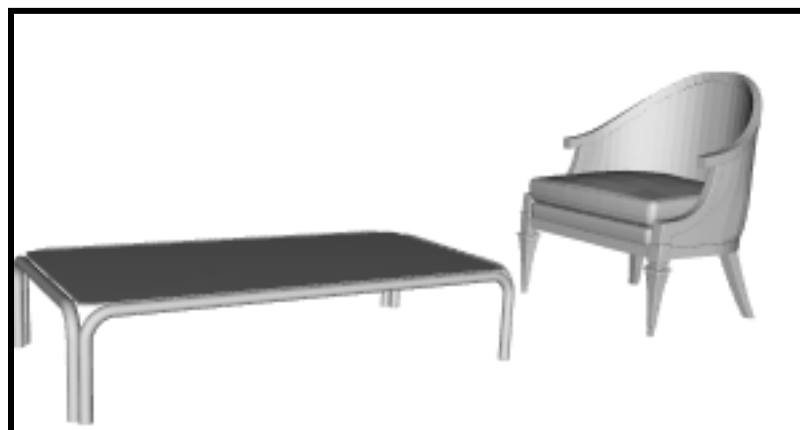
Task 6 of 33

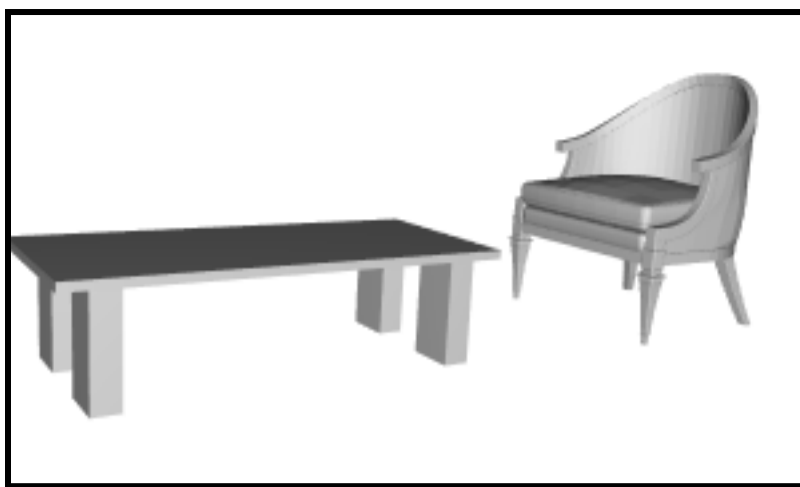


Task 7 of 33

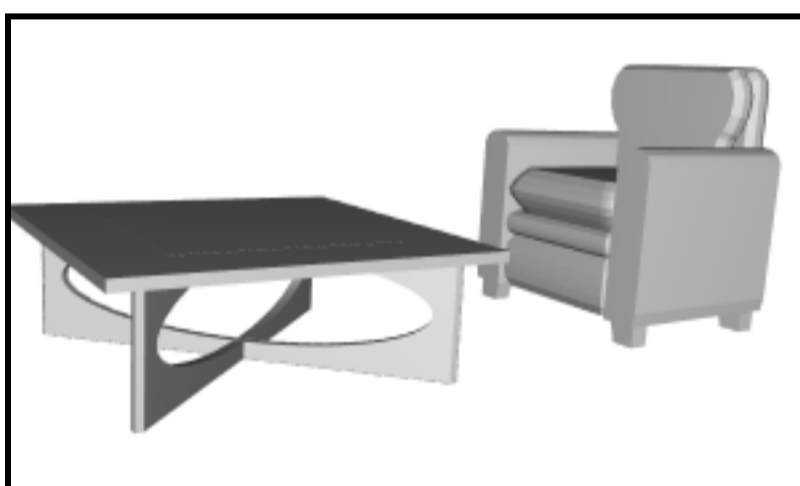
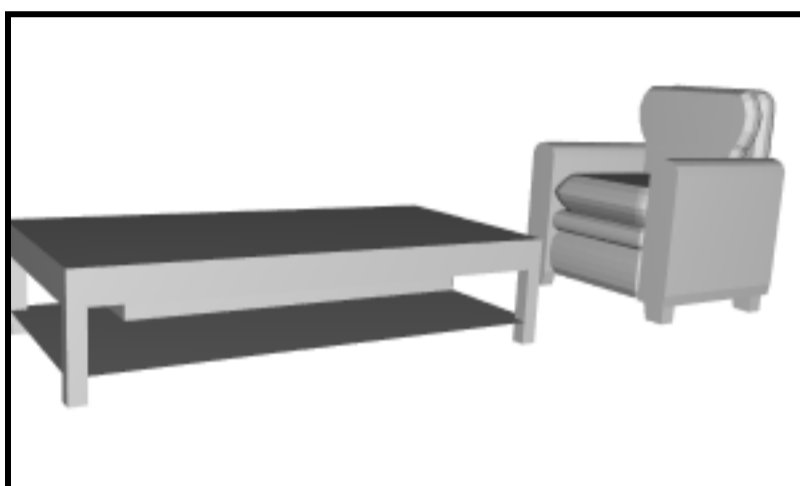


Task 8 of 33

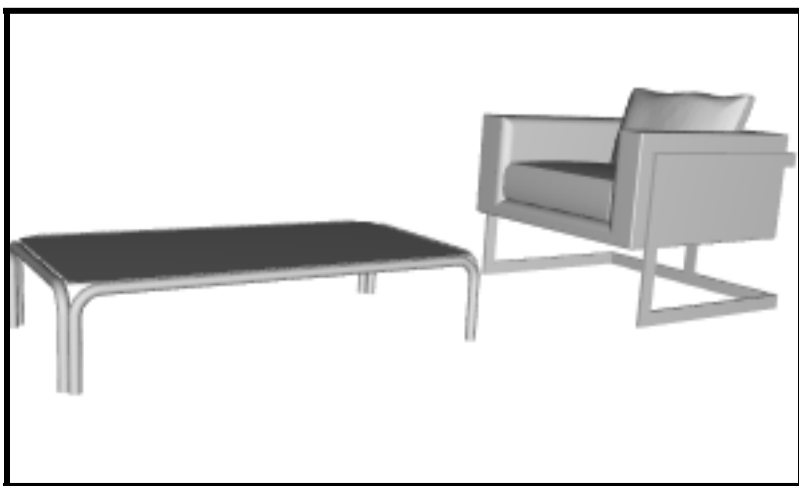
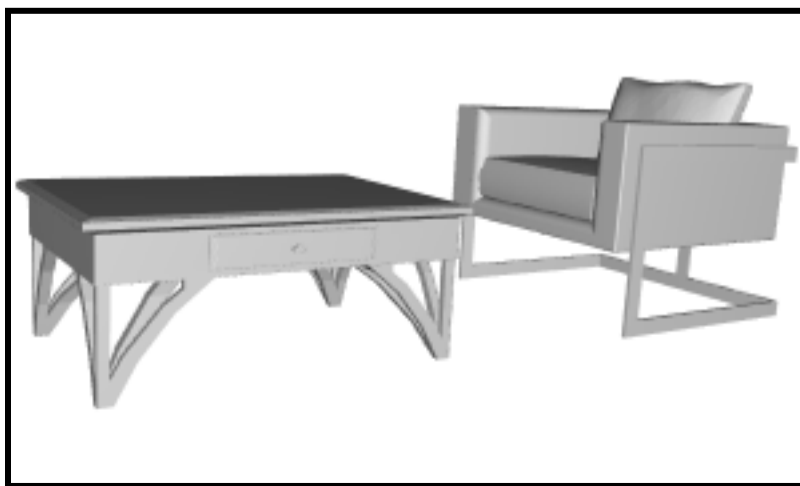
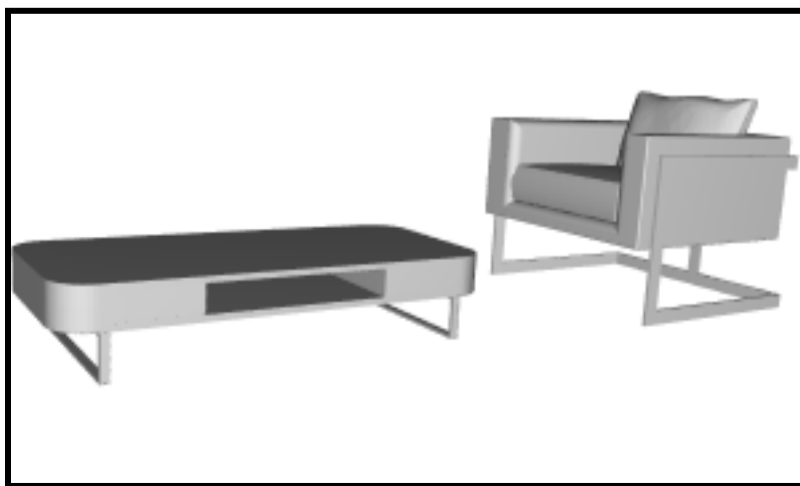
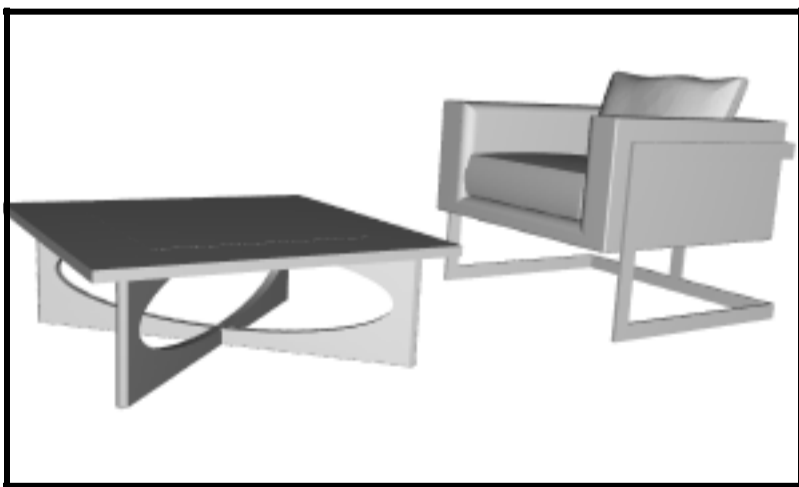
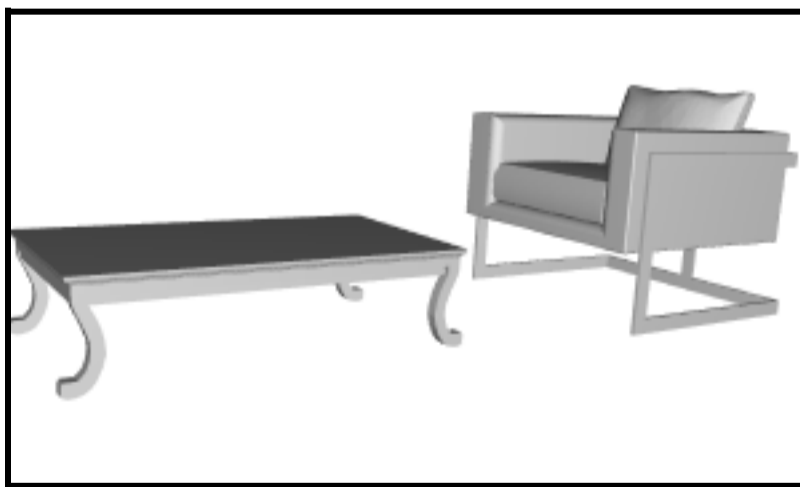
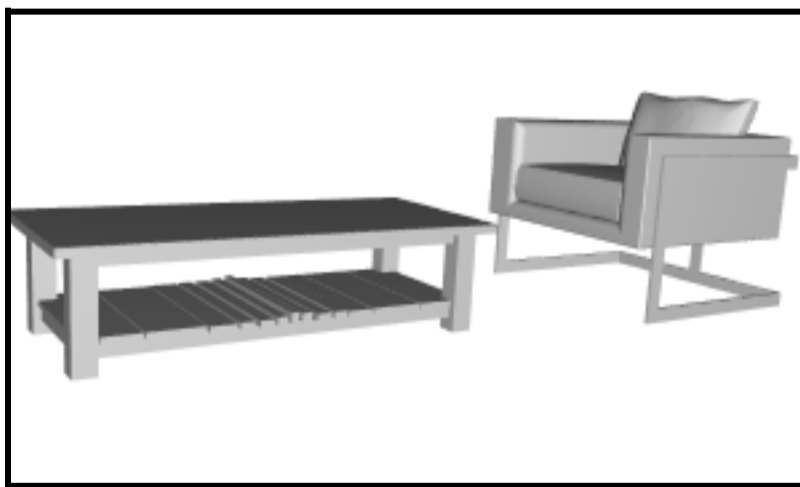




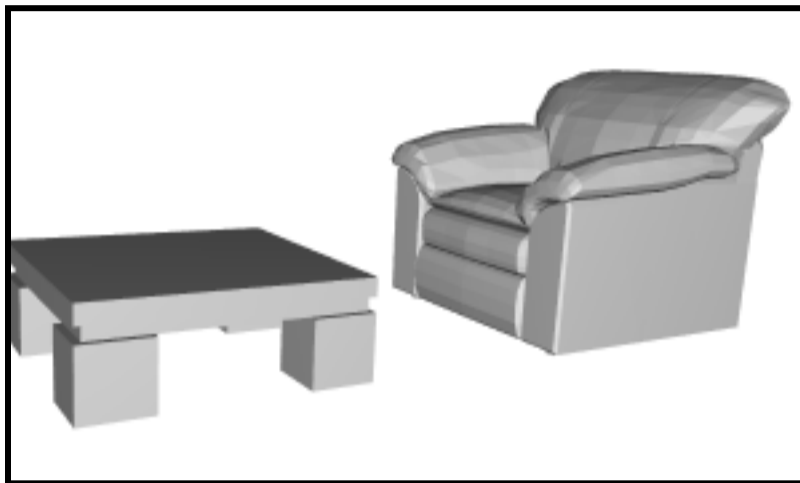
Task 9 of 33



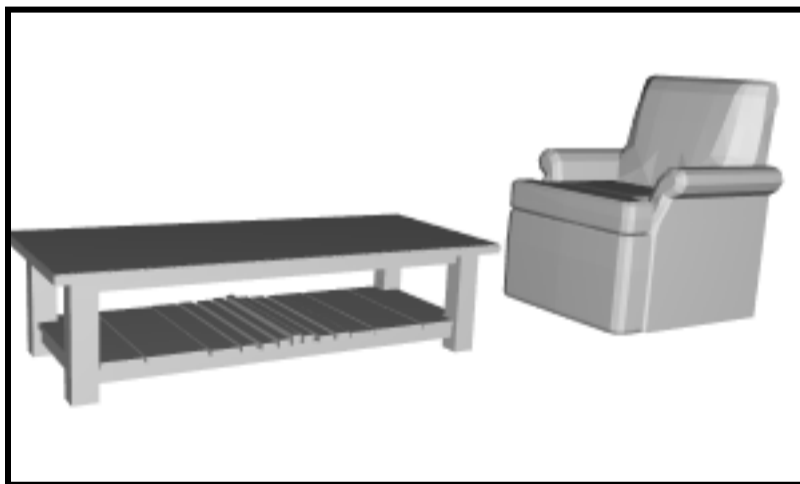
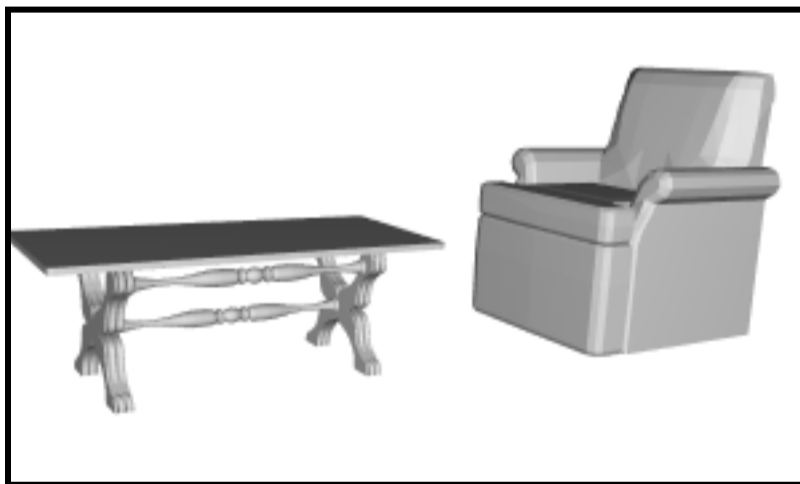
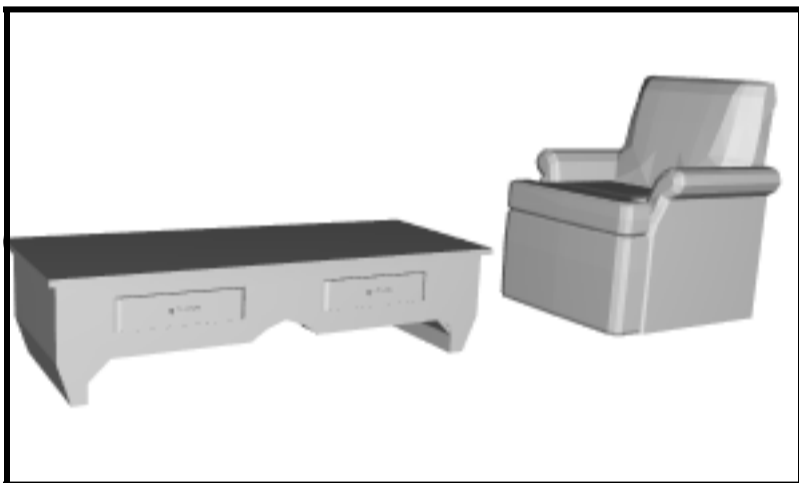
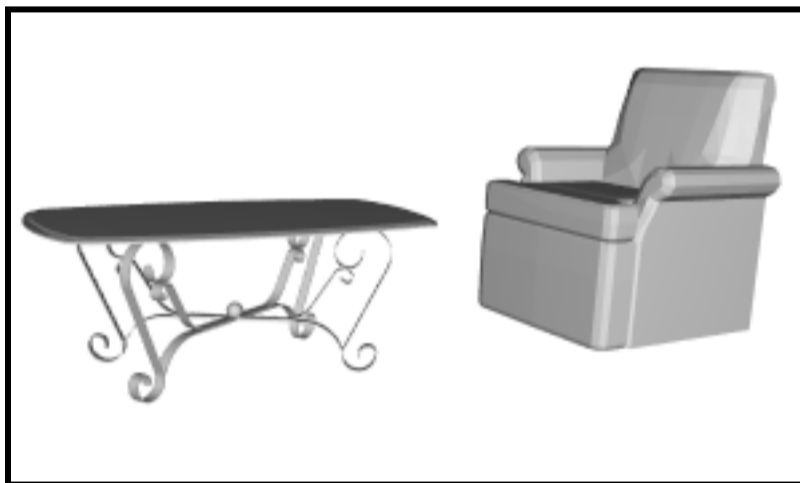
Task 10 of 33



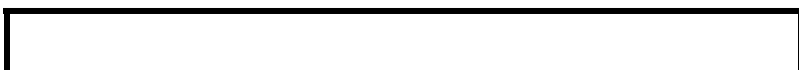
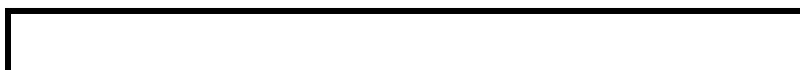
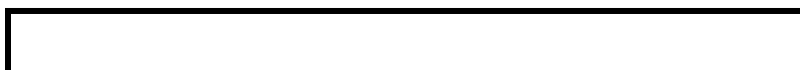
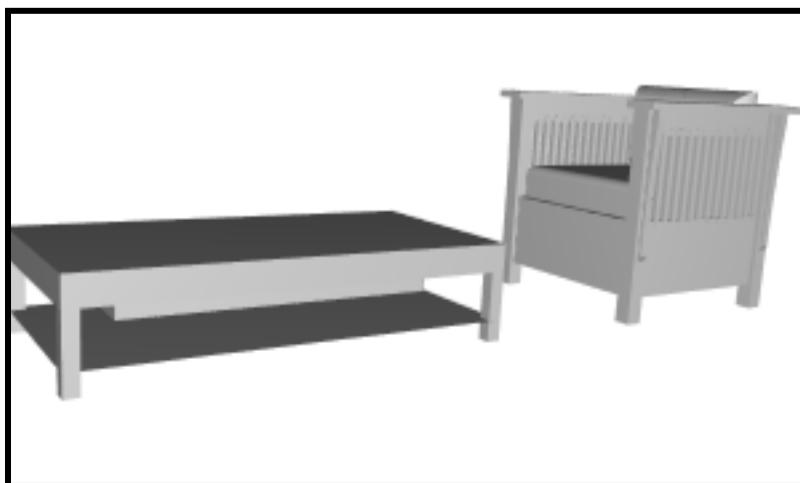
Task 11 of 33



Task 12 of 33



Task 13 of 33

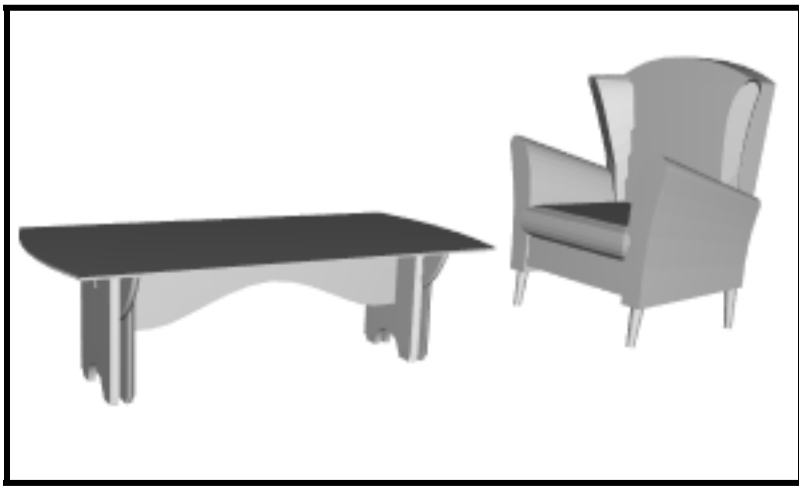
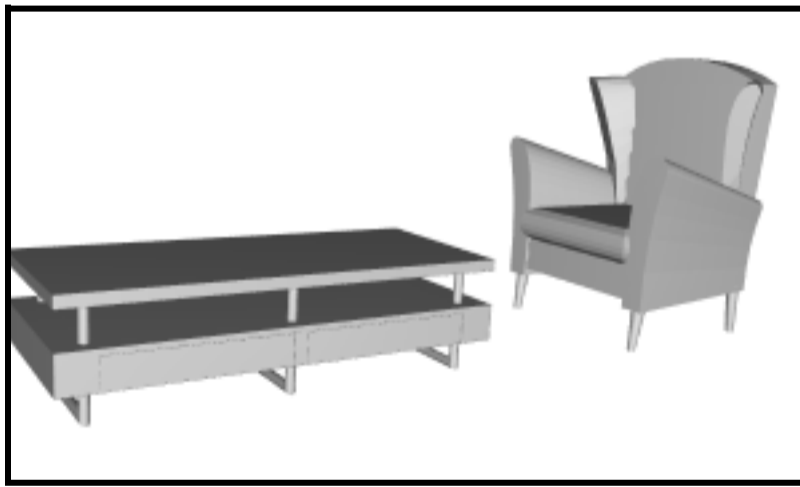




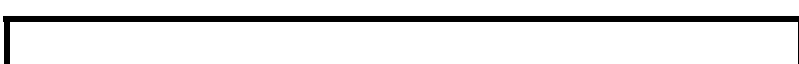
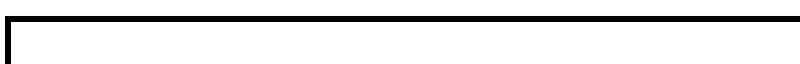
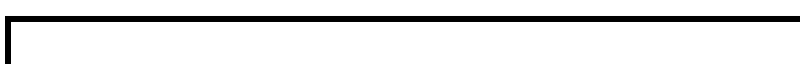
Task 14 of 33



Task 15 of 33

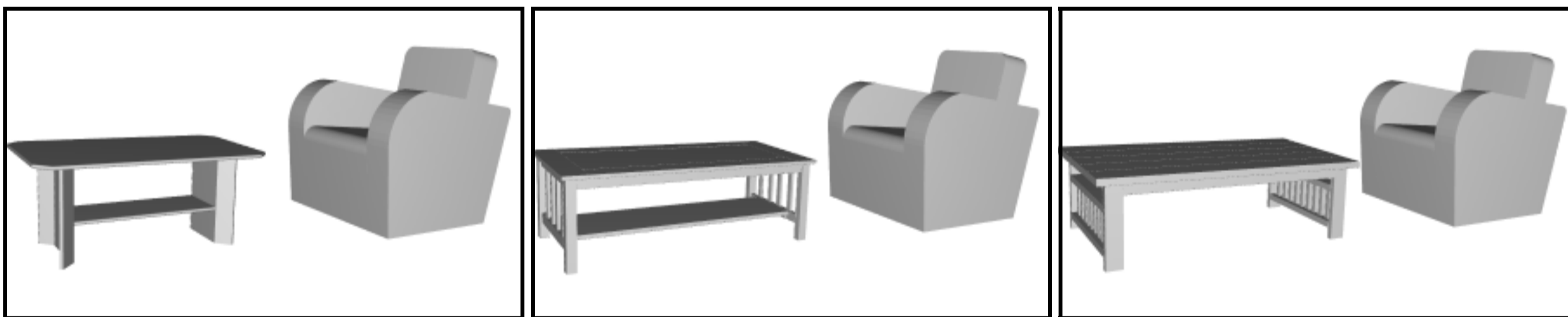
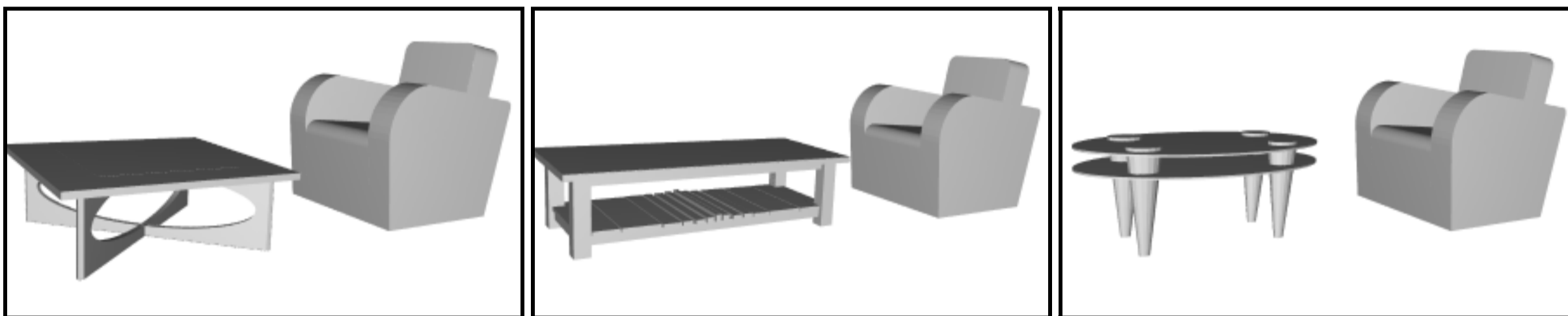


Task 16 of 33

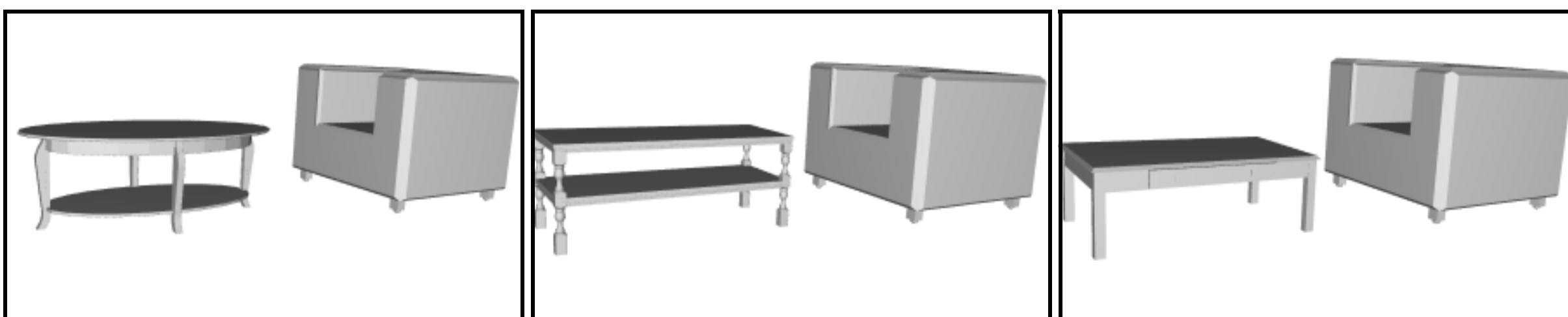




Task 17 of 33

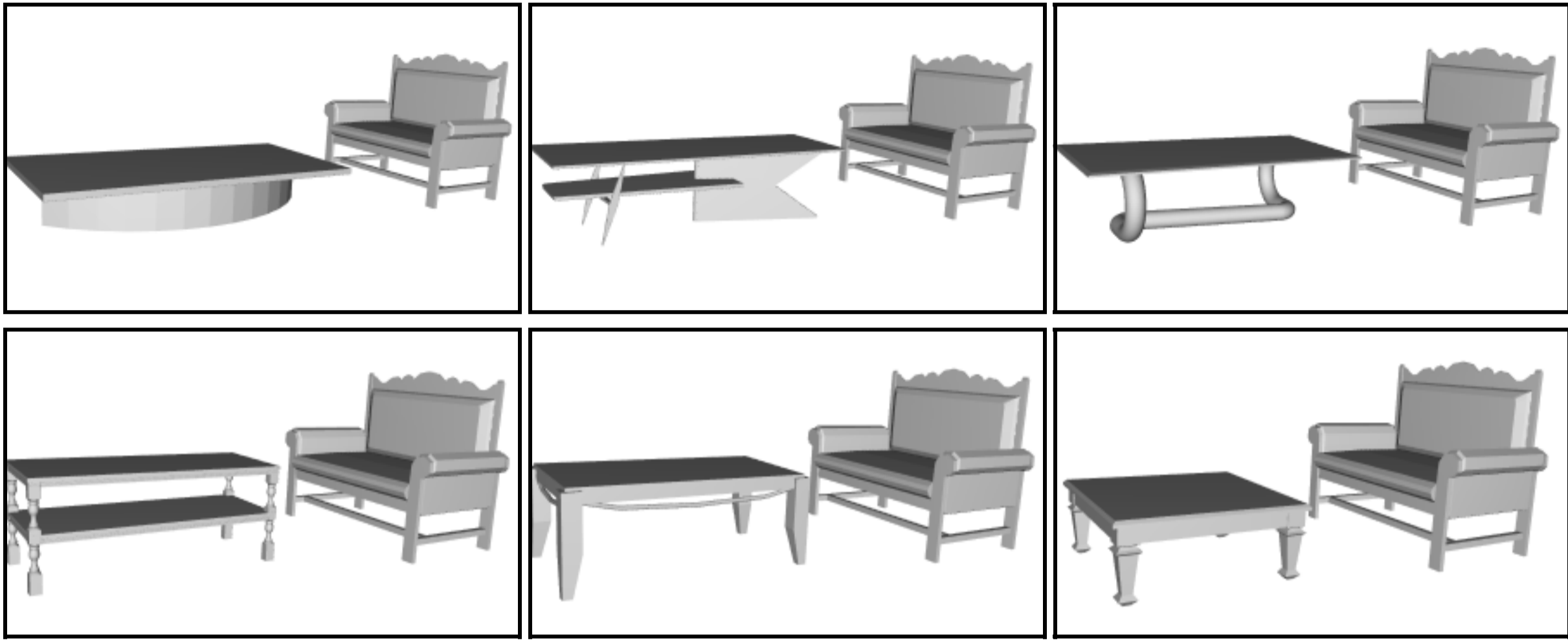


Task 18 of 33

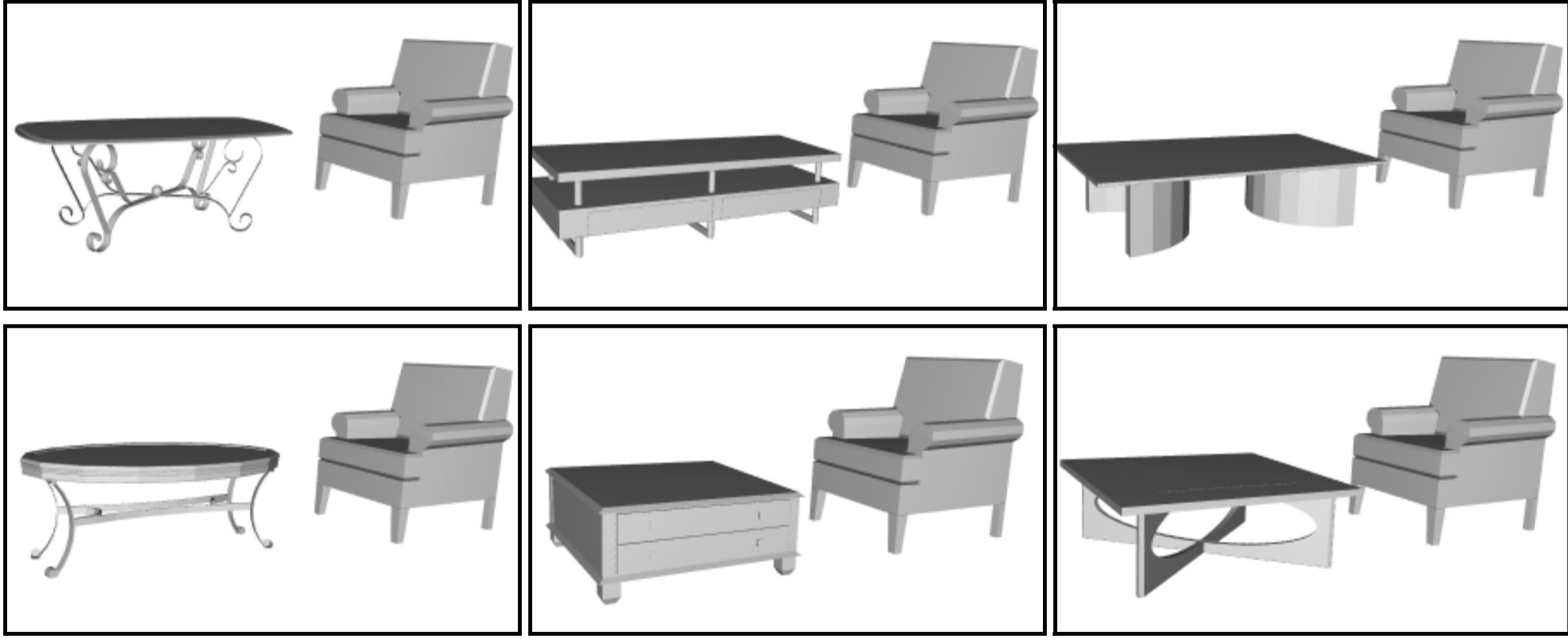




Task 19 of 33



Task 20 of 33

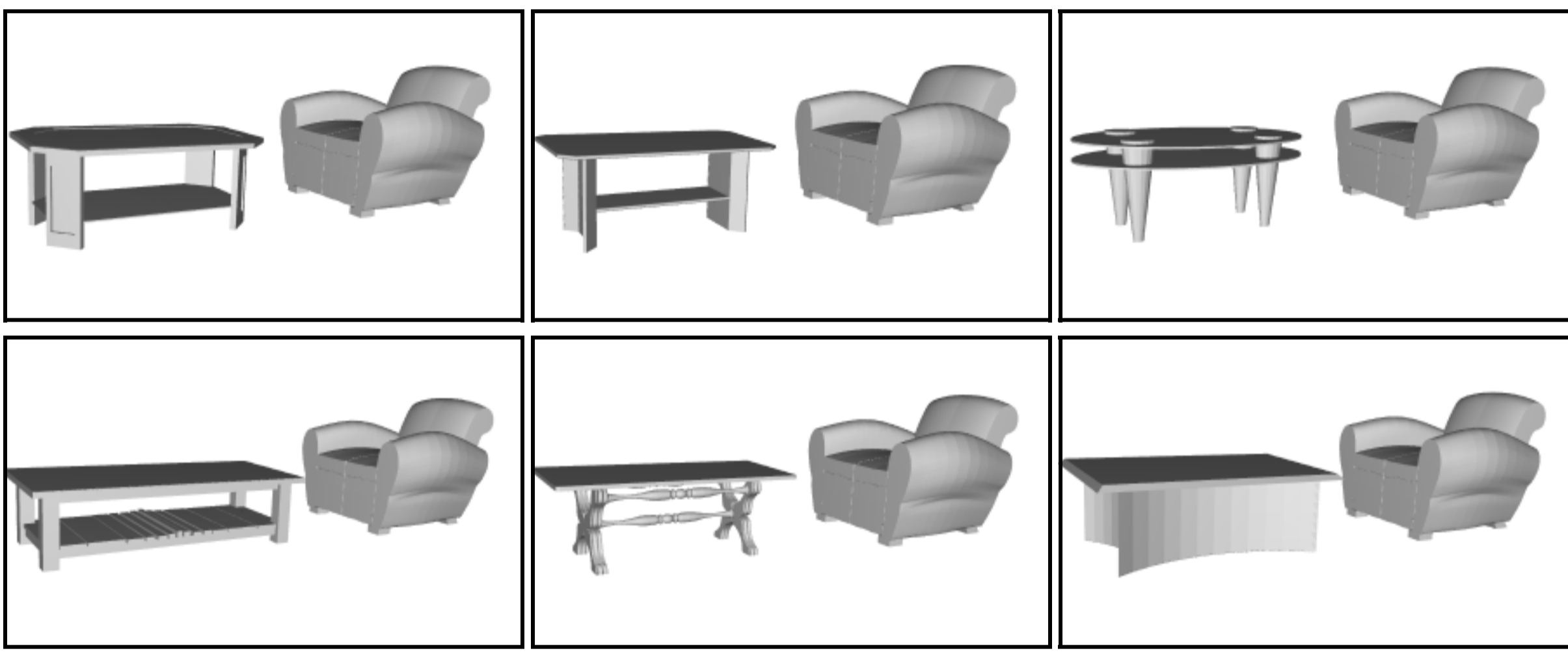


Task 21 of 33

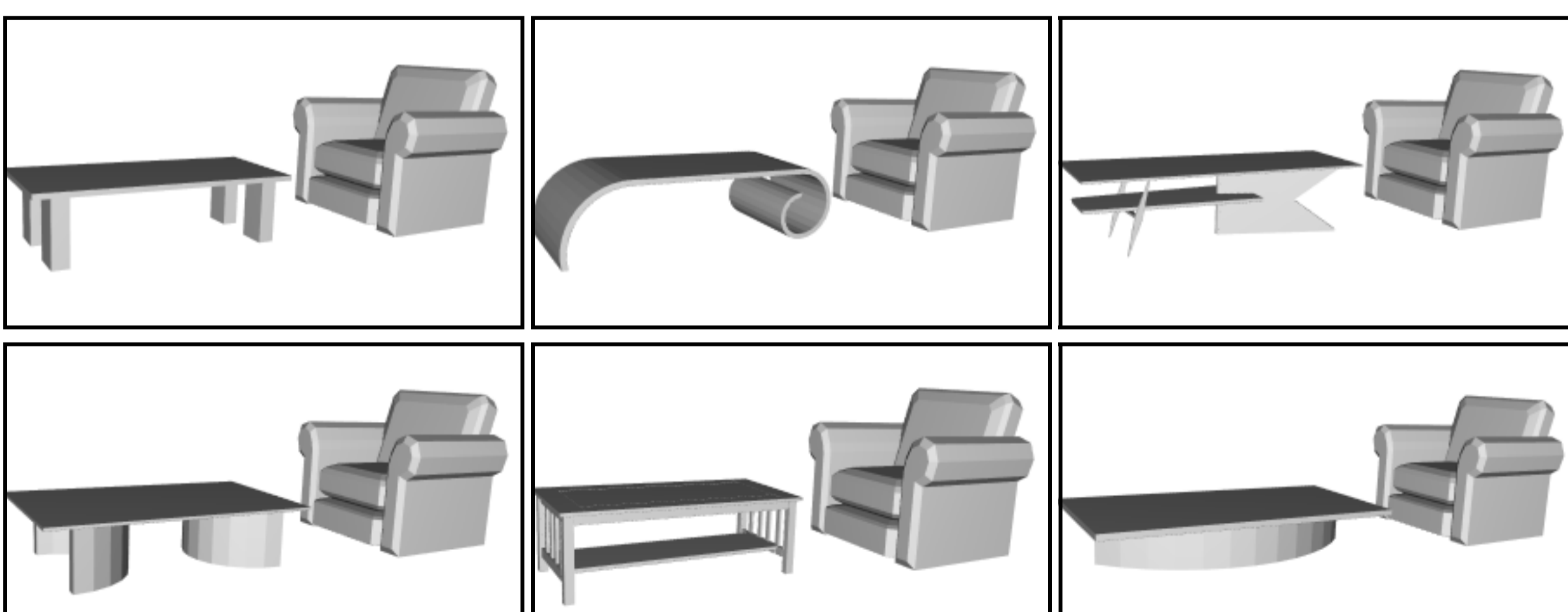




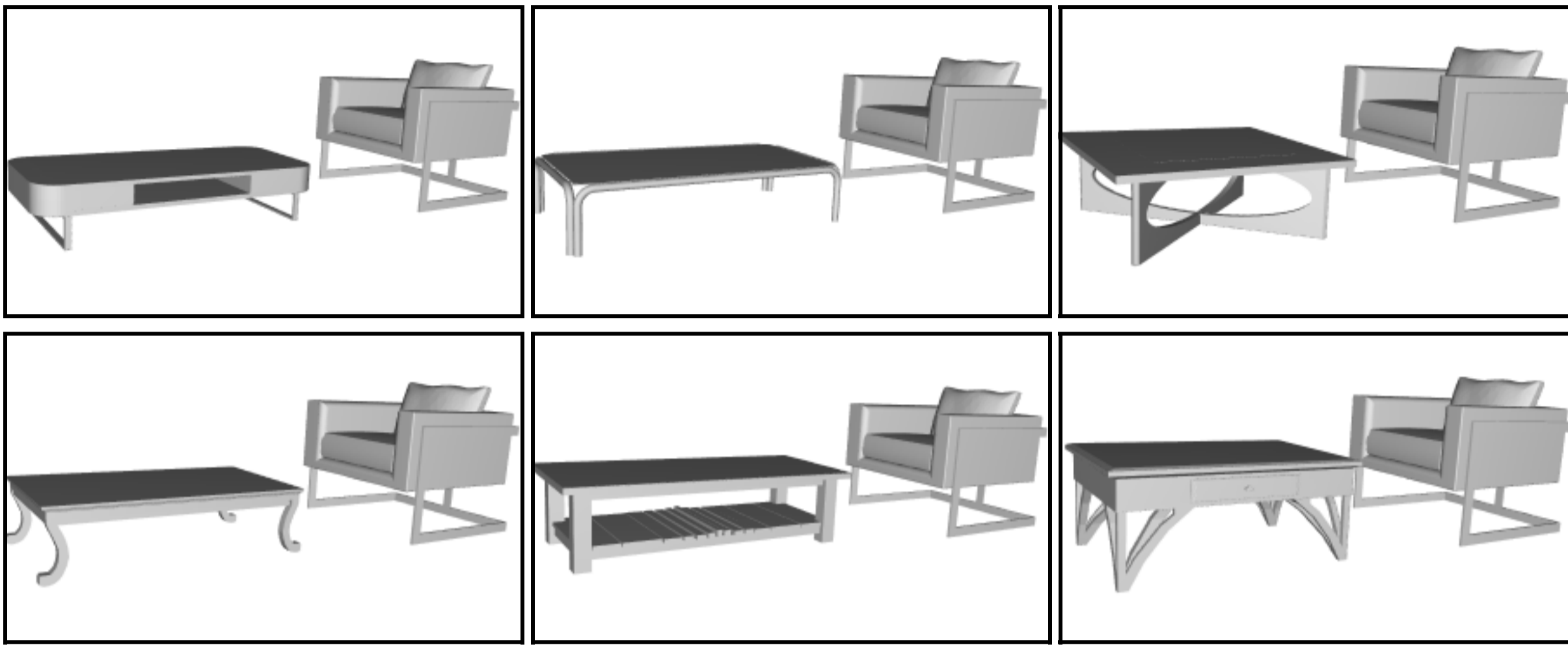
Task 22 of 33



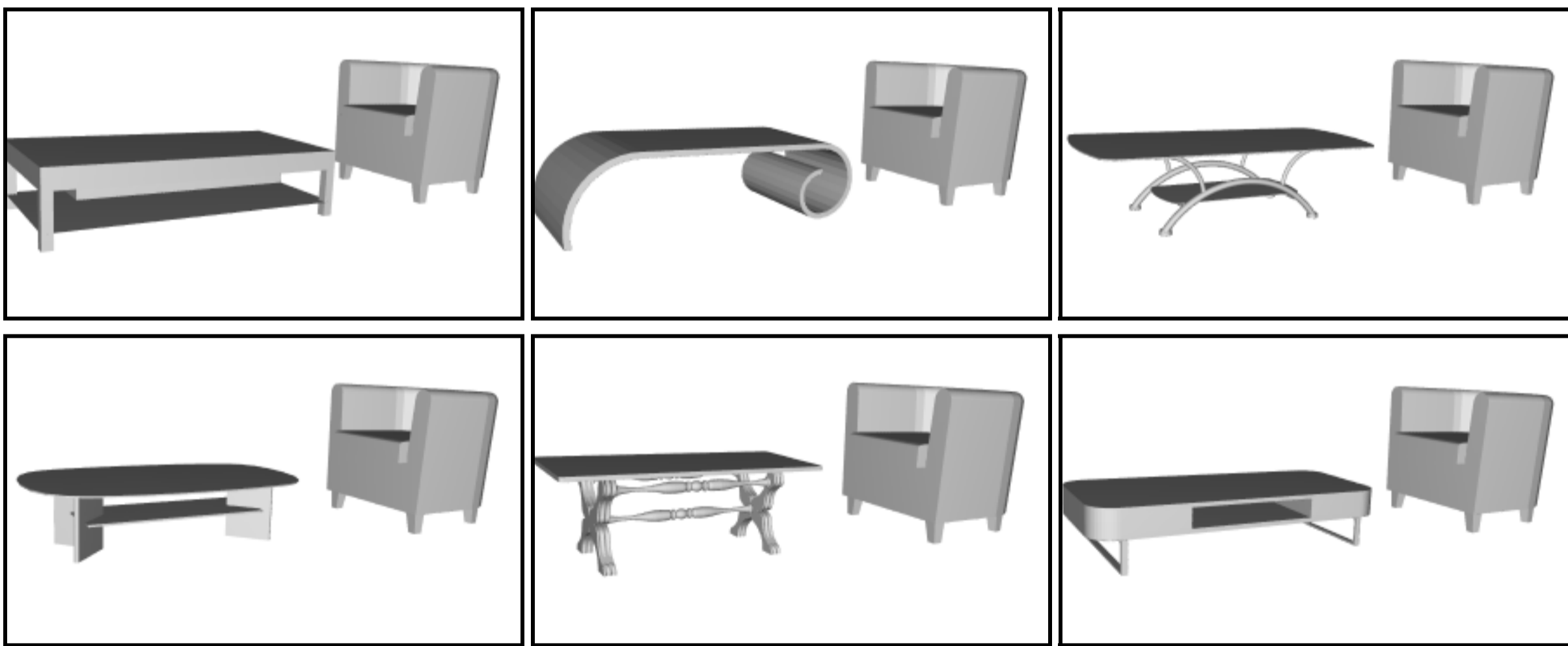
Task 23 of 33



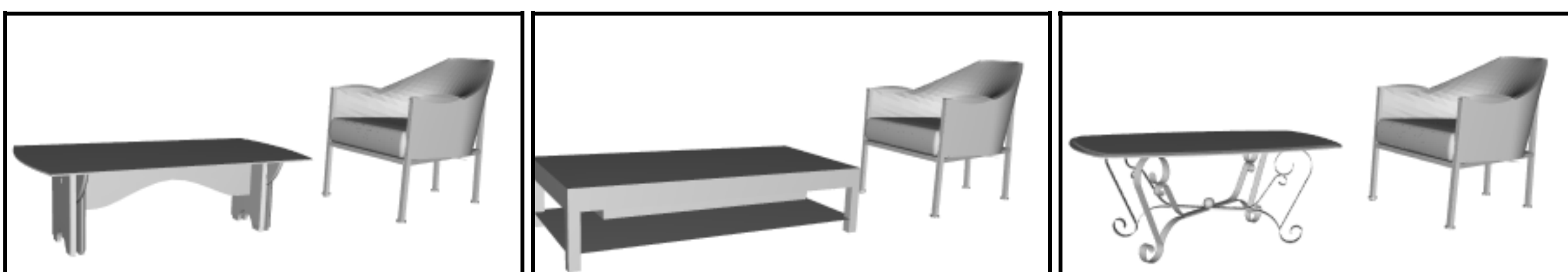
Task 24 of 33

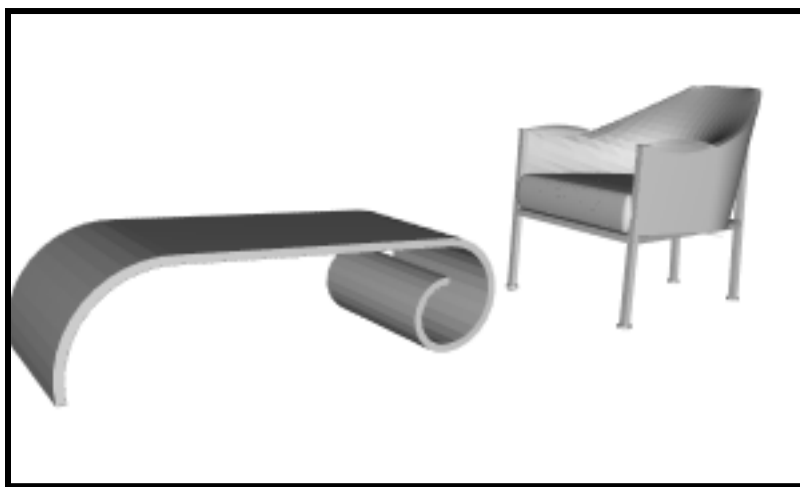


Task 25 of 33

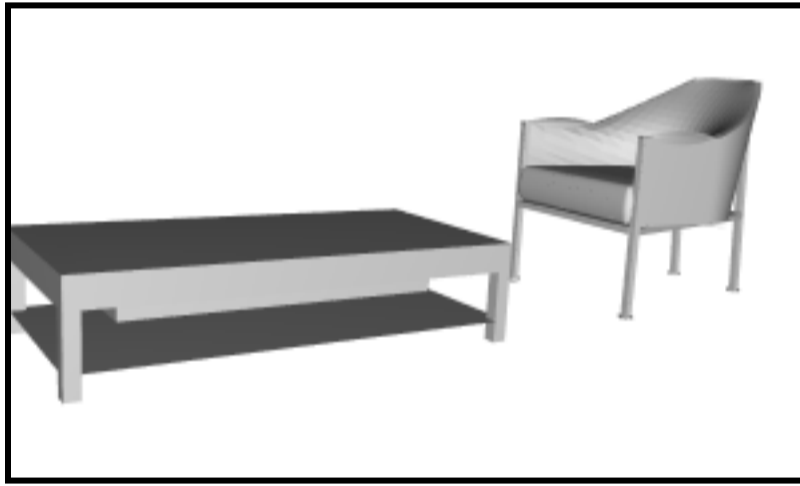
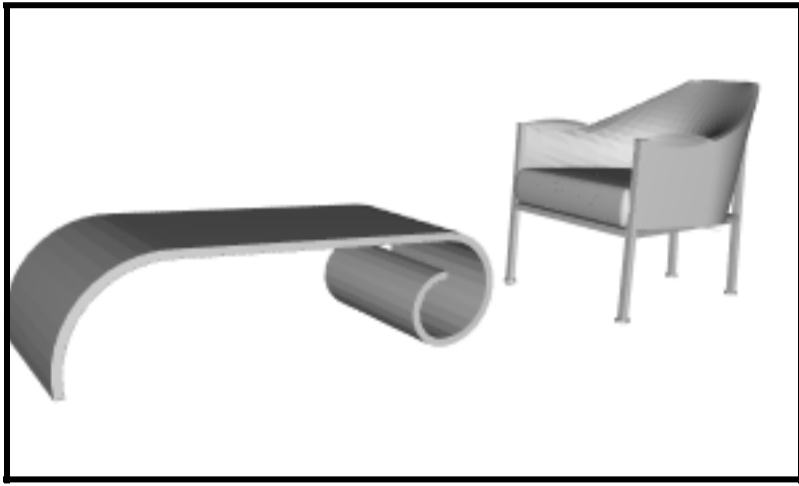
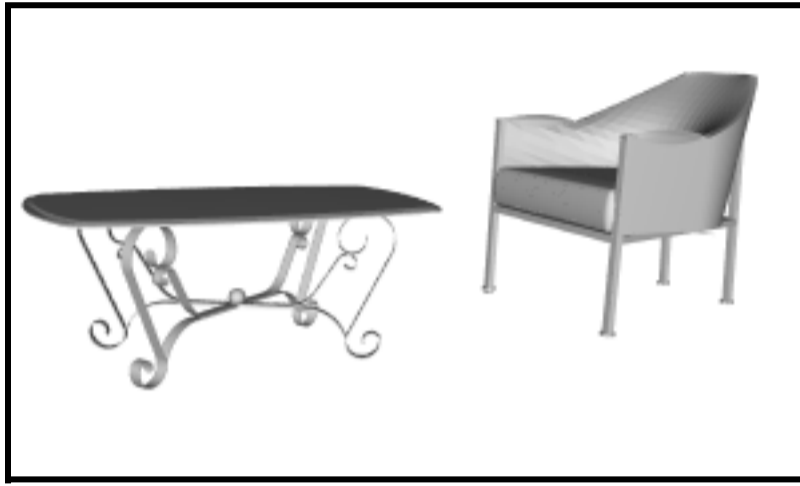


Task 26 of 33

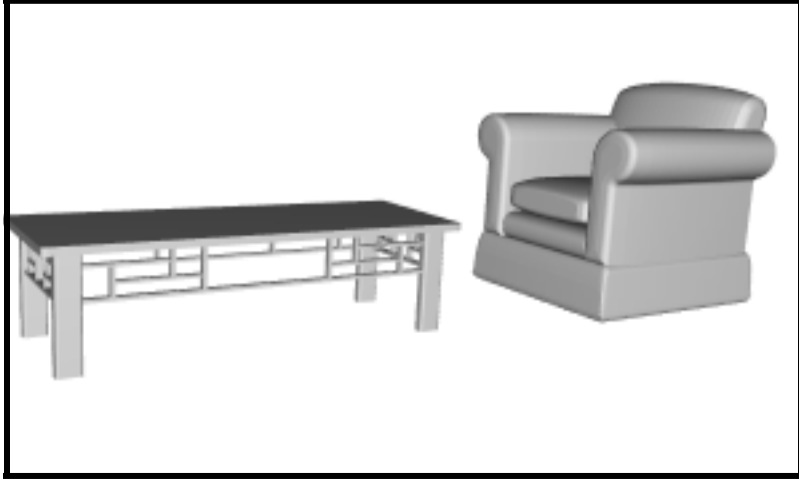
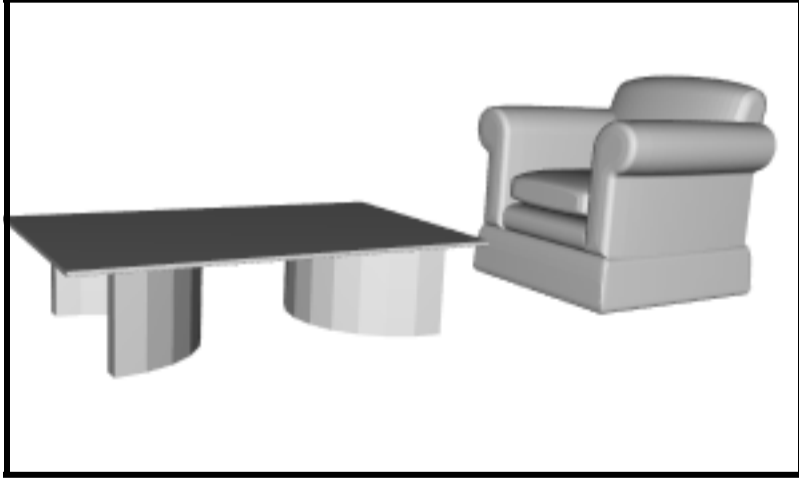




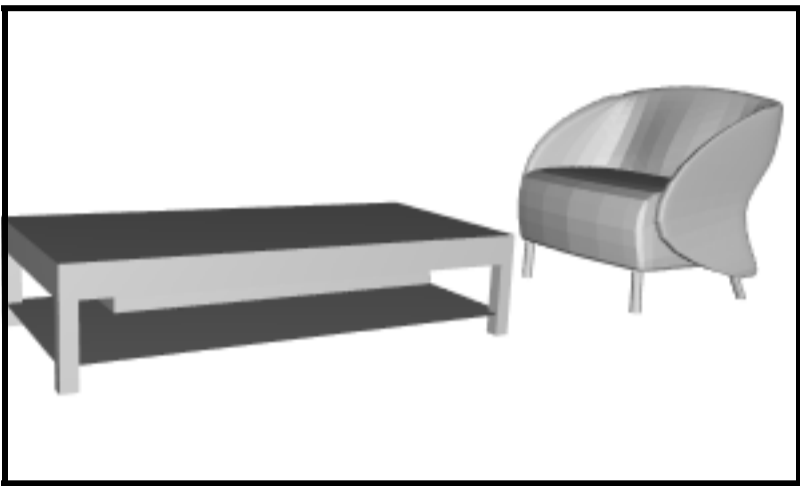
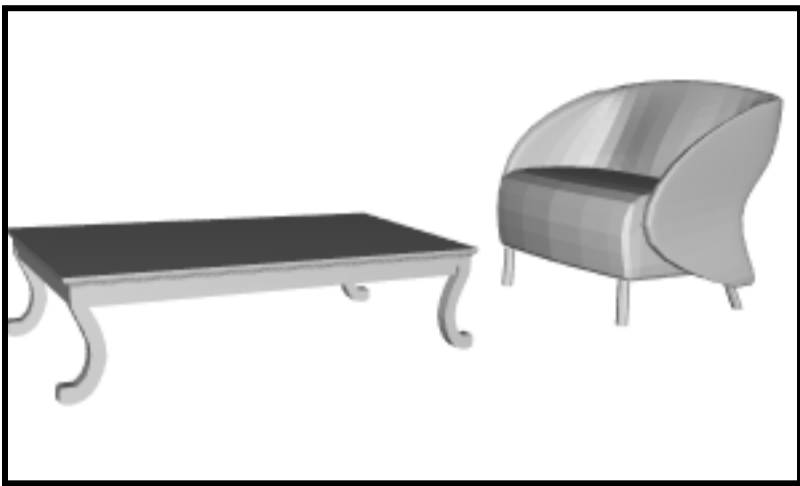
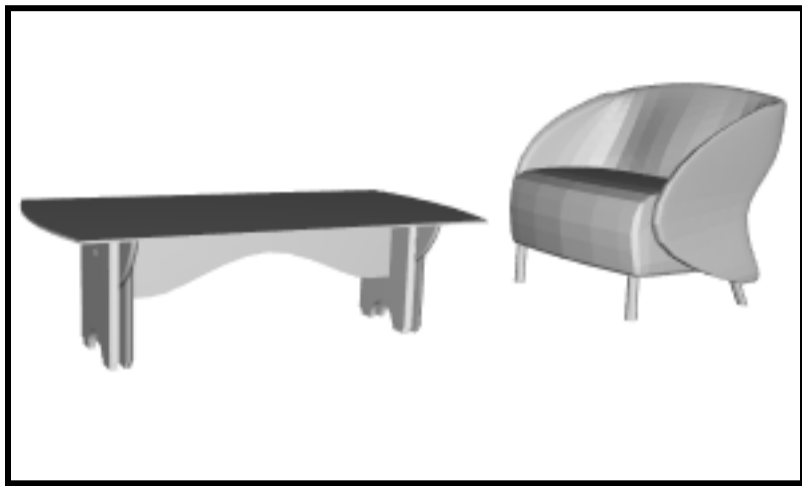
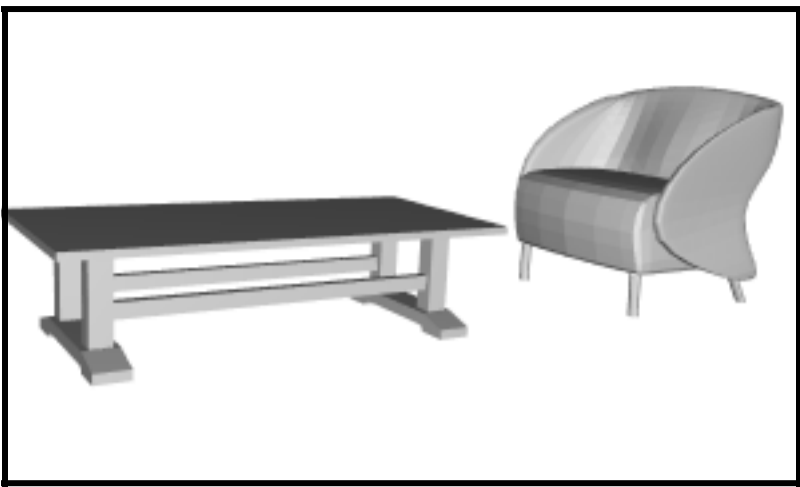
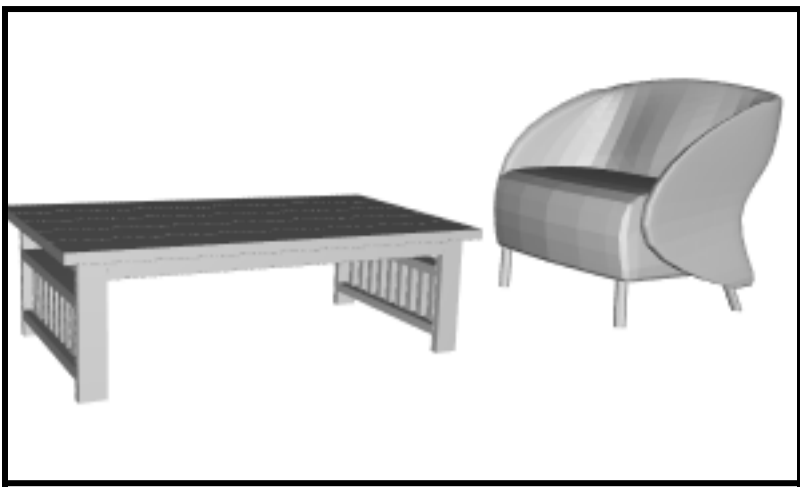
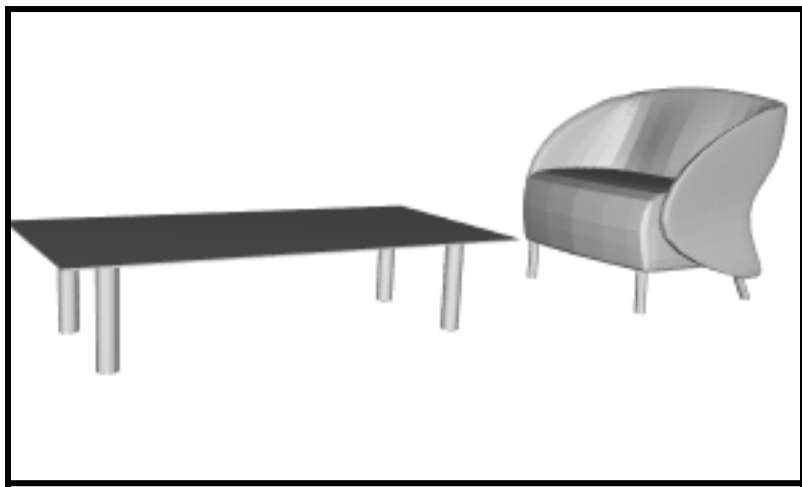
Task 27 of 33



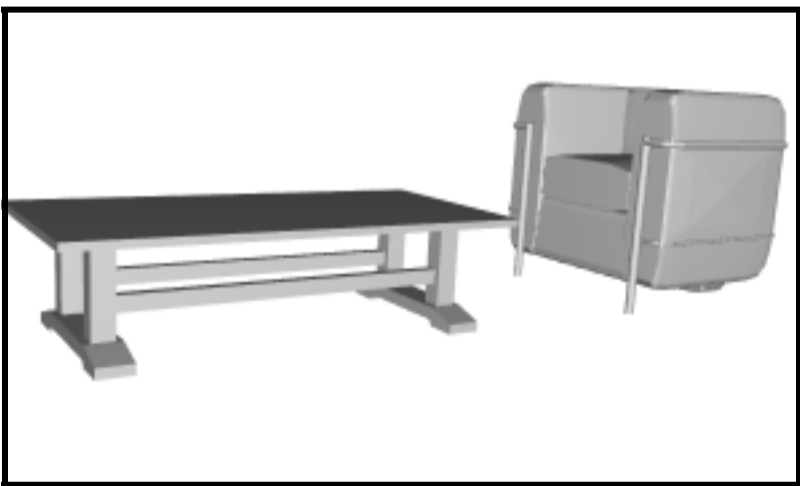
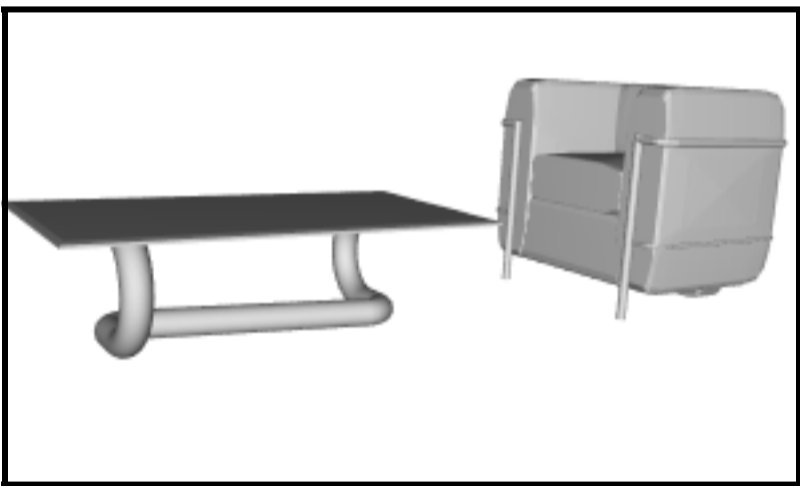
Task 28 of 33



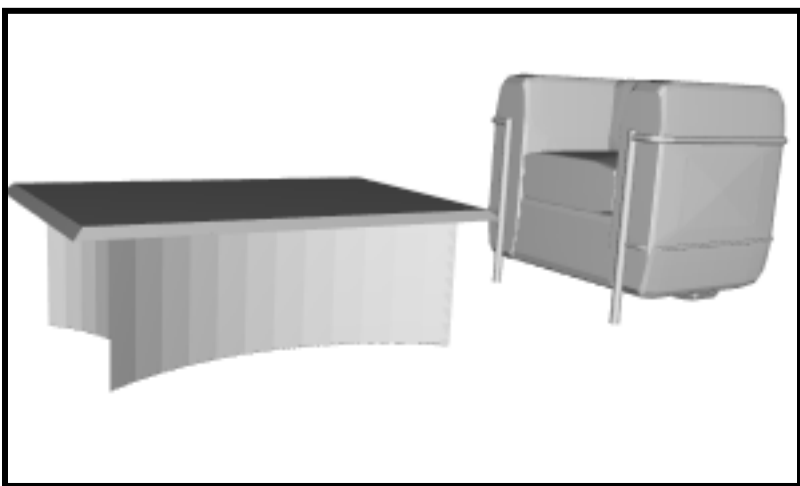
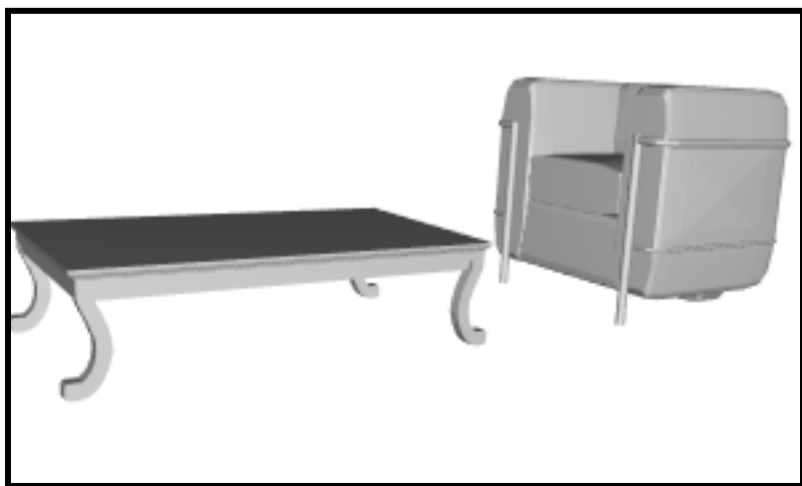
Task 29 of 33



Task 30 of 33

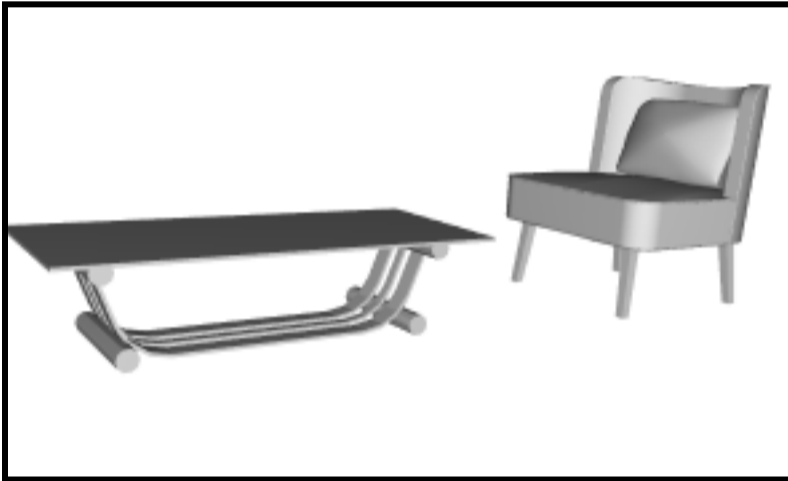
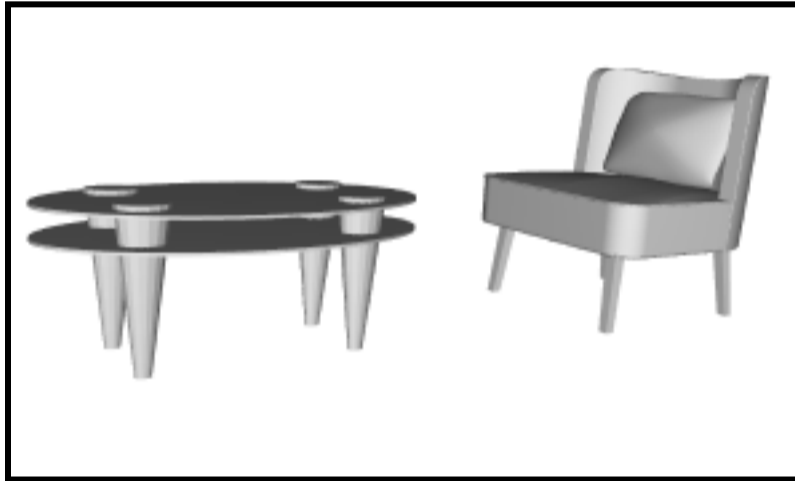
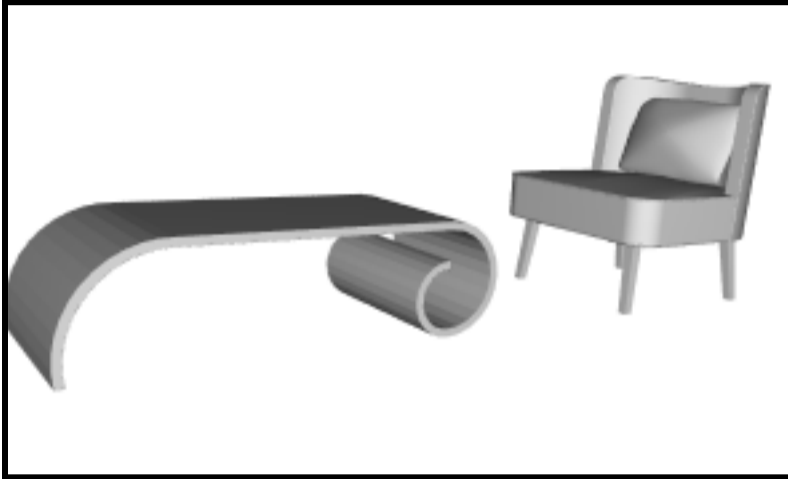


Task 31 of 33

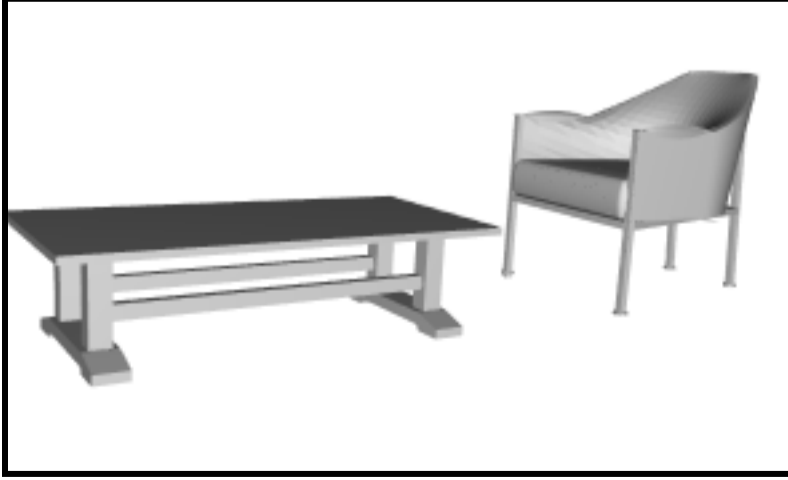




Task 32 of 33



Task 33 of 33



Finishing up...

Press this button to submit your survey:

Submit